

# Marex ECS – Designed to keep the course

**AVENTICS**<sup>A</sup>





Diesel engine control

Single and twin propulsion

Up to four control stations

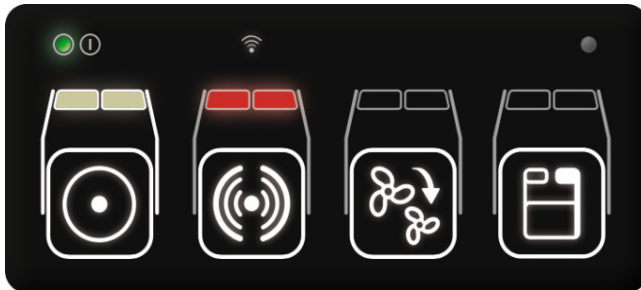
Optimized for small pleasure and workboats

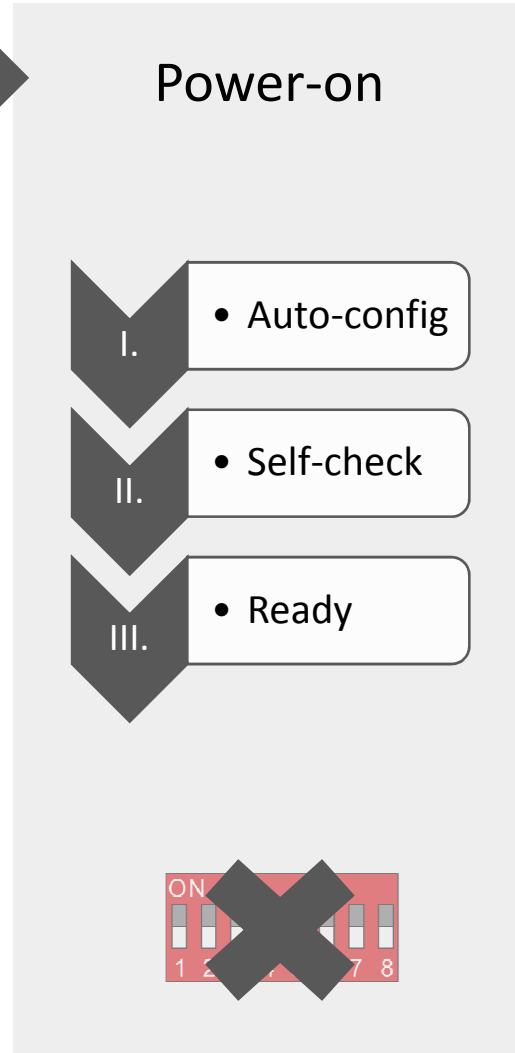
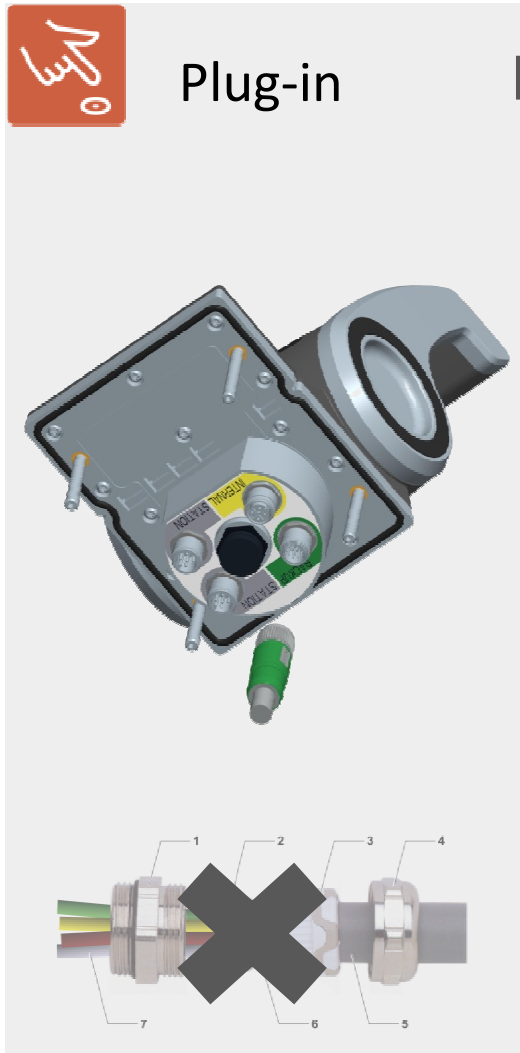
Compatible with major engines and gear boxes



## Unique Matching Design

- Exclusive black and chrome surfaces
- Discreet white backlight illumination
- Language independent symbols

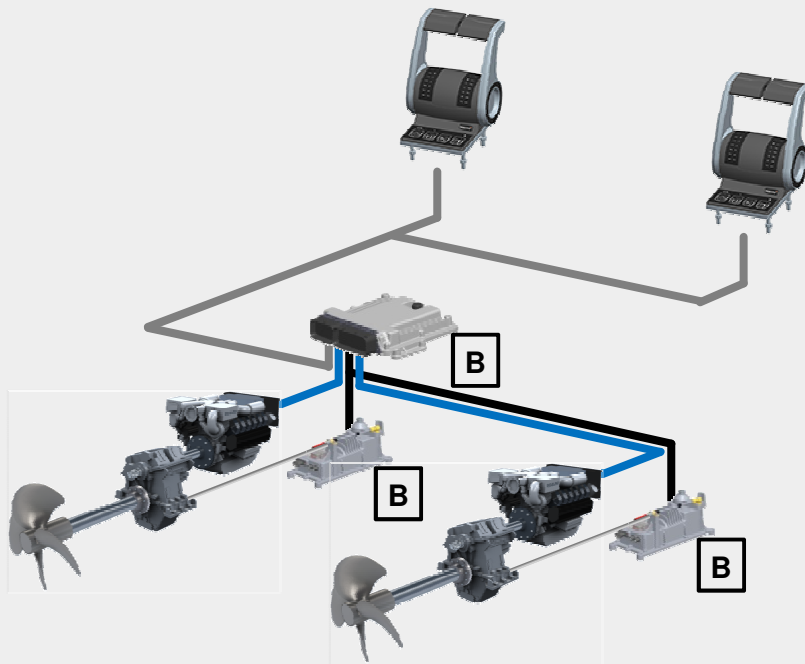






## basic

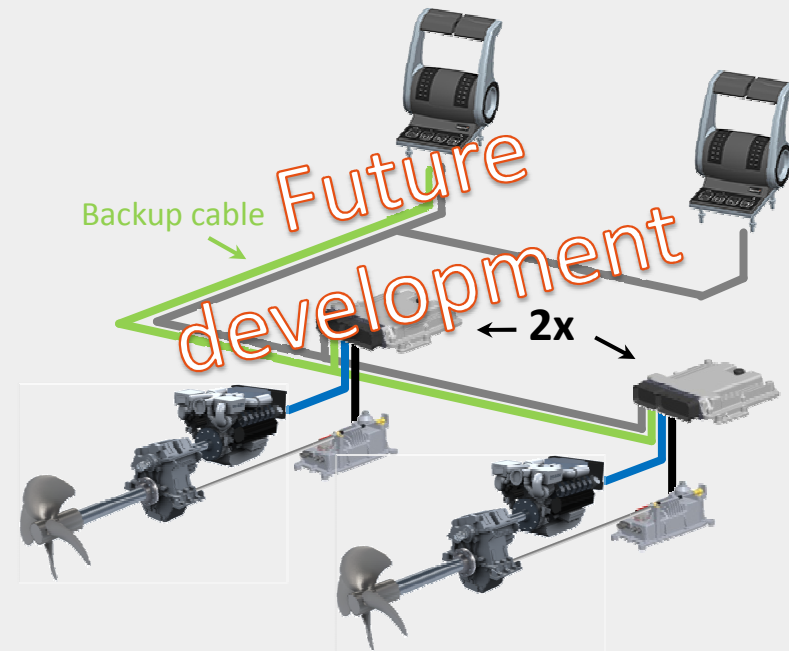
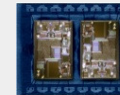
ABYC compliant system



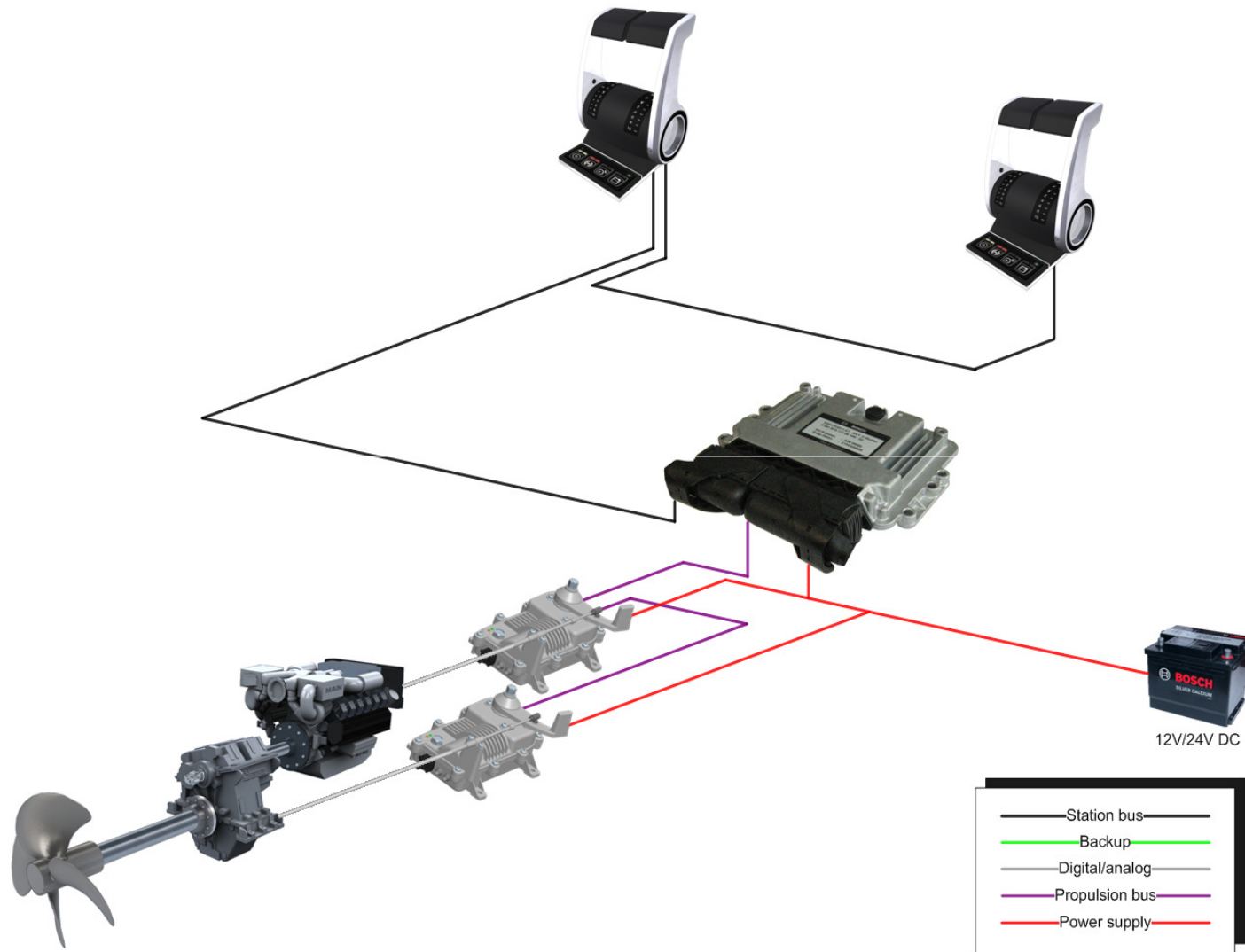
**B** automotive components

## enhanced

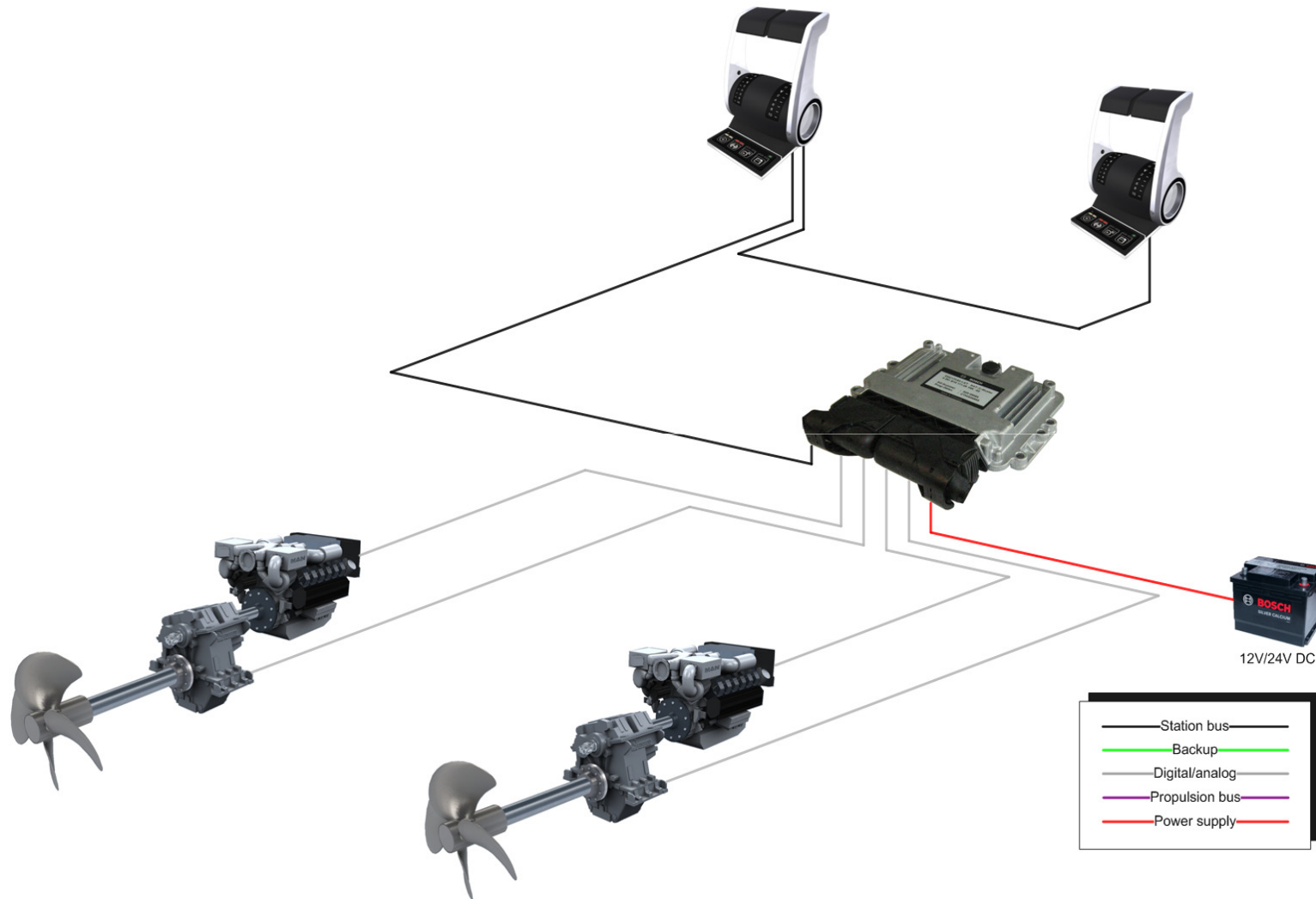
Backup Hall sensor

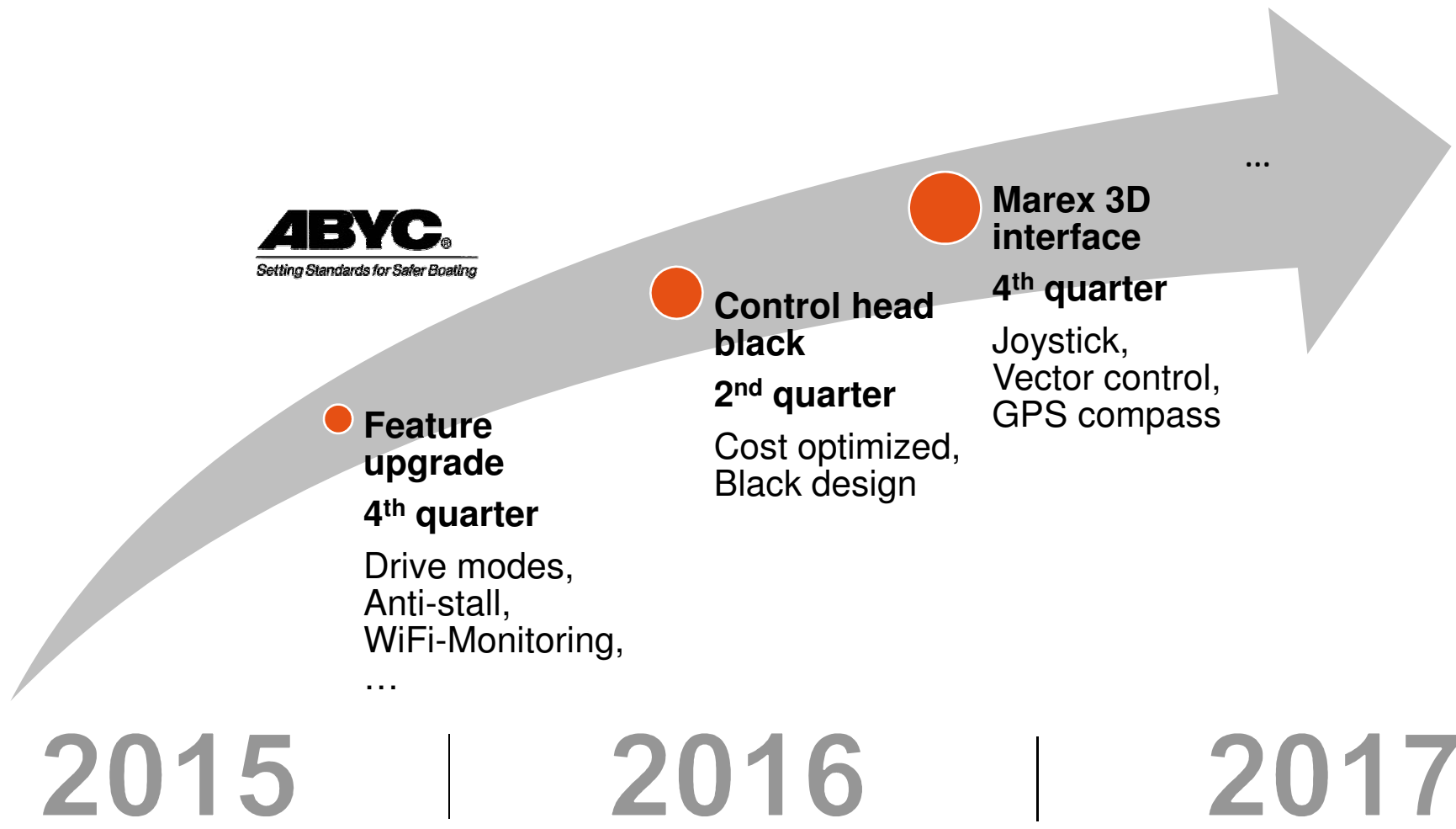


# Marex ECS: single (basic)



# Marex ECS: twin (basic)



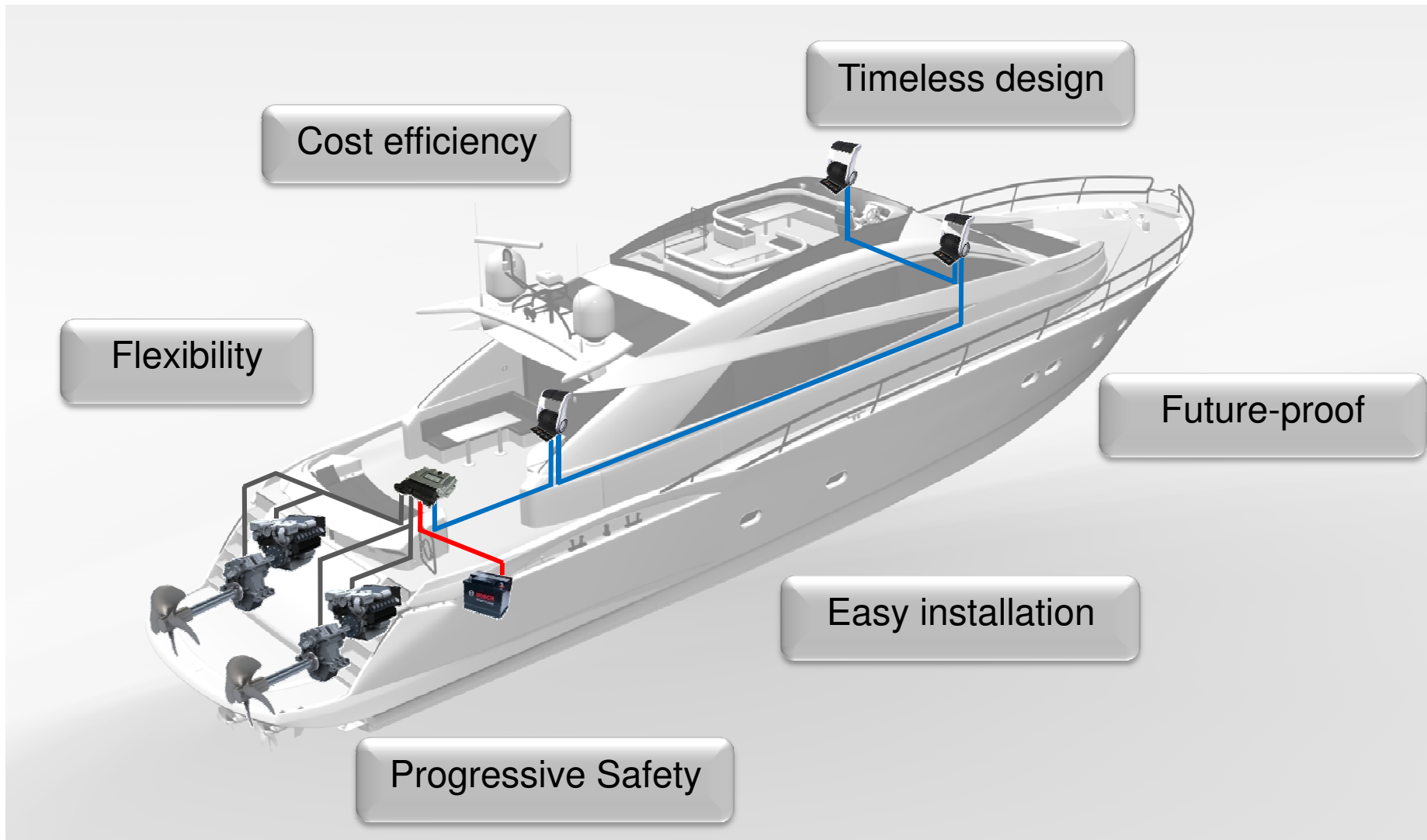


● **Feature upgrade**  
**4<sup>th</sup> quarter**  
Drive modes,  
Anti-stall,  
WiFi-Monitoring,  
...

● **Control head black**  
**2<sup>nd</sup> quarter**  
Cost optimized,  
Black design

● **Marex 3D interface**  
**4<sup>th</sup> quarter**  
Joystick,  
Vector control,  
GPS compass  
...





# Marex ECS - Designed to keep the course

AVENTICS<sup>A</sup>

